

ITINERARY

***Antarctica, the Falkland Islands  
& South Georgia Cruise***  
*October 20 - November 12, 2025*



*King Penguins will welcome us when we stop at South Georgia Island. These second-largest of the penguins have an enormous breeding colony that we'll visit. Photograph by guide Doug Gochfeld.*

*We include here information for those interested in the 2025 Field Guides Antarctica – Antarctic Peninsula, South Georgia & the Falkland Islands tour:*

- a general introduction to the tour
- a description of the birding areas to be visited on the tour
- an abbreviated daily itinerary with some indication of the nature of each day's birding outings

*These additional materials will be made available to those who register for the tour:*

- an annotated list of the birds recorded on a previous year's Field Guides trip to the area, with comments by guide(s) on notable species or sightings
- a detailed information bulletin with important logistical information and answers to questions regarding accommodations, air arrangements, clothing, currency, customs and immigration, documents, health precautions, and personal items
- a Field Guides checklist for preparing and keeping track of the birds we see on the tour
- after the conclusion of the tour, a list of birds seen on the tour

**A**ntarctica remains the ultimate, most glorious frontier for exploration and discovery on our planet. Almost alien in immensity, it is a continent of volcanoes, glaciers, islands, and oceans. It is the most elemental wilderness, where the naked might of Nature assaults the senses as in no other place on Earth.

Any trip to Antarctica is a mind-blowing experience due to the incredible wildlife spectacles, the scenery, and simply the realization that you're actually heading to one of the most remote parts of the world. Whether you're interested in pelagic birding, seeing penguins up close, watching whales and dolphins slip through the water, or simply exploring a new

and mysterious continent, there will be something special waiting for you aboard the ship. We invite you to join us for this exploration of the Antarctic Peninsula and the distinctive island destinations of South Georgia and the Falklands, both remarkable wildlife havens, aboard a stable expedition cruise ship outfitted for comfortable living as well as rugged zodiac landings.

Field Guides offers this tour as a partnership with Oceanwide Expeditions, a Dutch company that specializes in oceanic voyages to polar regions. Your Field Guides leader will work with the Oceanwide staff to tailor this experience to maximize your birding and wildlife-watching opportunities. Oceanwide's details about our cruise can be found online here:

<https://oceanwide-expeditions.com/antarctica/cruises/otl21-25-falkland-islands-south-georgia-antarctica>



*We may make a stop at Half Moon Island, just off the Antarctic Peninsula. On a previous tour, we were able to hike through the fabulous landscape near a colony of Chinstrap Penguins. Our landings will be determined by the staff of Oceanwide.*

*Photograph by guide Doug Gochfeld.*

*We want to be sure you are on the right tour! Below is a description of the physical requirements of the tour. If you are concerned about the difficulty, please contact us about this and be sure to fully explain your concerns. We want to make sure you have a wonderful time with us, so if you are uncomfortable with the requirements, just let us know and we can help you find a better fitting tour! Field Guides will not charge you a change or cancellation fee if you opt out within 10 days of depositing.*

## About the Physical Requirements & Pace

While this tour is not extremely physically intensive, it is important for you to be in relatively good shape and health.

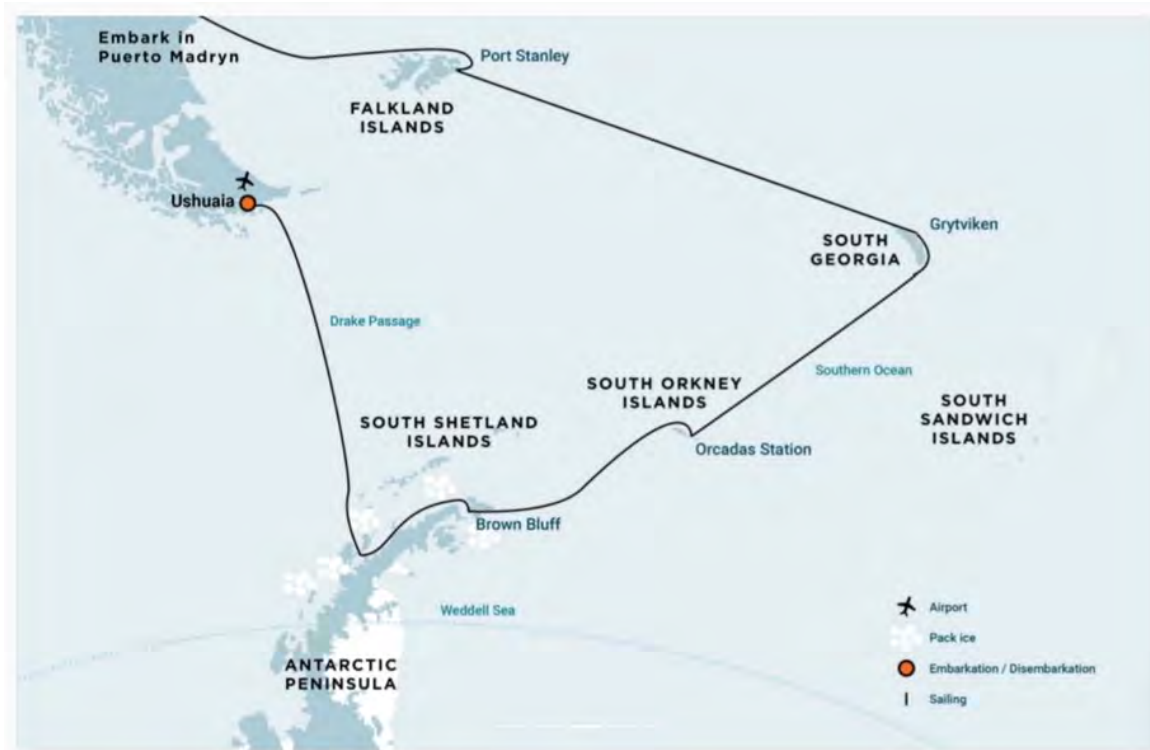
- **TRAILS:** We will be walking on uneven terrain, sometimes with a considerable incline. All hiking during shore landings is optional; when given the option by the expedition staff, we often opt for the shorter hikes and less rigorous physical activities because they allow more time for birding and enjoying wildlife, though you are always free to opt into whatever shore excursions are offered by the expedition staff.
- **POTENTIAL CHALLENGES:** it is important for you to be in relatively good shape and health. There is a doctor on the ship, however, once at sea, medical issues take on heightened significance due to the difficulty in transporting passengers to medical facilities.
- **PACE:** Most days on board the boat will begin about 7:30 a.m.; ship-provided activities for the day will depend upon where we are, and whether landings are planned. There will also be possibilities to bird from ship before the



ship's wake-up call, and after ship activities finish for the day. Your guide will offer ship-based group pelagic birding opportunities outside of the ship-provided activities, but these are always, of course, optional.

- **ELEVATION:** Elevation is not an issue, however, rough seas are to be expected. Seasickness is a real possibility as the Southern Ocean is a windy place with occasional high seas. Seasickness can be managed with medication including Bonine, Scopolamine, and others (some useful remedies require a prescription). Please contact your physician for detailed information.
- **WEATHER:** It is probably best to be prepared for regular daytime temperatures in the high-30s to the mid-40s Fahrenheit around South Georgia and the Antarctic Peninsula, and warmer temperatures in Puerto Madryn and the Falkland Islands (sometimes up to 70°F!). Antarctic cold-fronts and/or high winds could occur during the tour, dropping temperatures below the 30's, however. It will be windy on some days, and some rain or snow is to be expected.
- **ZODIAC LANDINGS:** It is important for you to be able to get into and out of a zodiac (inflatable boat used as cruising and landing craft for 8-10 people at a time) in occasionally rough sea conditions. This includes occasions when the zodiac is moving up and down in relation to the boarding gangway.
- **OPTING OUT:** All shore landings and zodiac cruises are optional.

If you are uncertain whether this tour is a good match for your abilities, please don't hesitate to contact our office; if they cannot directly answer your queries, they will put you in touch with one of our guides.



## About the Birding Areas

**Falkland Islands** – Our first destination after leaving Puerto Madryn will be the Falkland Islands, where we hope to make multiple landings. These islands are currently considered territory of the United Kingdom following the Falklands War, though Argentina still considers “Las Malvinas” to be part of that country. Planned landings should give us opportunities to look for the specialty birds of the islands including Striated Caracara, Falkland Steamer-Duck, Ruddy-headed Goose, Blackish Cinclodes, Cobb’s Wren, and White-bridled (Black-throated) Finch. We’ll also explore seabird colonies that include Gentoo, Magellanic, and Southern Rockhopper Penguins, Imperial Cormorants (Shags), Black-browed Albatrosses, and “Falklands” Brown Skuas. A planned landing at Port Stanley, capital of the Falklands, will give us time to search for Rufous-chested Dotterel and Two-banded Plover, too (and maybe to tilt a pint at the local pub if we find the birds early).

**South Georgia** – The montane oceanic island of South Georgia is one of the world’s most important breeding areas for seabirds and marine mammals, and we aim to spend several days enjoying it. Massive colonies of hundreds of thousands of King Penguins await us at Salisbury Plain and St. Andrews Bay. In between, we’ll set foot on this impressive island and learn about the impact of humans on this site – the introduction of rats here has led to large declines of some breeding seabirds and one of the world’s most southerly-breeding songbirds, the South Georgia Pipit. Just in the past five years, however, a project spearheaded by the South Georgia Heritage Trust has eradicated rats from the island, and pipits and seabirds are already rebounding dramatically. We’ll visit the whaling station of Grytviken and perhaps drink a toast to the spirit of Ernest Shackleton, the heroic British explorer who is buried in a small cemetery there. Penguins abound on South Georgia, and we’ll likely encounter Gentoo, Macaroni, and King at close range. We will also spend time looking for Gray-headed Albatross, Light-mantled Albatross, Snow Petrel, Fairy Prion (a rarity in the herds of Antarctic Prions), and diving-petrels, including the difficult-to-identify South Georgia Diving-Petrel. Marine mammals are also spectacular here, with huge numbers of Antarctic Fur Seals and Southern Elephant Seals on the beaches and plenty of whales in the waters around the island.



*The South Georgia Pipit nests in the tussock grass along the coast of South Georgia Island. These hardy passerines somehow endure the Antarctic winter, and are the most southerly breeding songbirds. Photograph by guide Doug Gochfeld.*

**Antarctic Peninsula/ South Shetland Islands** – Though the wildlife diversity is lower around Antarctica proper as compared with South Georgia and the Falklands, some of the world’s most iconic animals live here. We’ll get to meet Chinstrap and Adelie Penguins at their colonies, and we’ll search for Weddell, Crabeater, and Leopard Seals on floating chunks of ice. With extreme luck and careful scanning, we might even find a rare Emperor Penguin while exploring the edges of this extraordinary place (though this is not likely on any given trip to this area). As on South Georgia, there are many potential landing sites around the Antarctic Peninsula. Many of these are islets with colonies of penguins or other things of interest, but the crew always strives for at least one “continental” landing, on the peninsula itself, though ice conditions dictate what landing sites are possible, and you must always be ready for changes of daily plans during expedition cruising. Some of our prior trips have included landings at Brown Bluff (near the tip of the peninsula), and Portal Point (farther south on the peninsula).

**Pelagic birding at sea** – We plan to maximize our time on the ship at sea in between Puerto Madryn, the Falklands, South Georgia, Antarctica, and Ushuaia. This means spending plenty of time on the deck of the ship in search of species that we’re only likely to encounter in pelagic waters offshore. These include (but are certainly not limited to) Northern and Southern Royal Albatross, Gray-headed Albatross, Blue Petrel, Prions (Slender-billed, Antarctic, and Fairy), Common, South Georgia, and Magellanic Diving-Petrels, Soft-plumaged Petrel, Kerguelen Petrel, Antarctic Petrel, and Wilson’s,



Gray-backed, and Black-bellied Storm-Petrels. Some of these are common on our route, while others will be sparsely distributed or absent. Time of year, weather, water temperature, and luck all play a role in determining which of these scarcer species we see and in what numbers. Distinct zones of birdlife will become obvious as we travel along, with the more northerly birds of the Falkland Plateau transitioning to those of the Scotia Arc and then the cold waters south of the Antarctic Convergence. Spending time outside on deck while at sea is essential to have a good chance at finding these seabirds; however, don't worry – you can always nip inside for a cup of tea and some biscuits for a quick break. We'll also spend time watching and identifying marine mammals when the opportunity presents itself.



*While we are at sea, we'll spend time sea-watching, looking for pelagic species such as this Light-mantled Albatross seen with Cape Petrels and an Antarctic Prion. Photograph by guide Bret Whitney.*

## Itinerary for Antarctica

**\*\*Important note\*\*** - This itinerary reflects a plan based on our last few trips. Please note that all sites and landings are subject to change due to weather and the discretion of the captain and expedition staff.

**We recommend people arrive at least a day early for this tour, to protect against any delays in transit, since the ship will not wait for anyone who hasn't embarked by the appointed time. If you want to do any sightseeing or birding in the Puerto Madryn area, our ground operator can arrange something for you.**

**Days 1-2, Mon-Tue, 20-21 Oct. Flights from the US to Buenos Aires/Buenos Aires to Trelew/Puerto Madryn.** Most flights depart the US in the evening and fly overnight to reach Buenos Aires early the next morning in time to make connections to Puerto Madryn. (This often entails transferring airports, from the international airport to the domestic airport in Buenos Aires. There is a shuttle that runs between the airports). The airport in Trelew, 30 miles from Puerto Madryn, is larger than that of Puerto Madryn, and may represent an easier flight itinerary. After checking in (and unwinding from the long flight), we'll meet in the hotel lobby of our hotel in Puerto Madryn at 7:00 p.m. for dinner and to discuss the following day's plan. Night in Puerto Madryn.

*Please note: A full buffer day in Puerto Madryn is recommended to mitigate against problems stemming from flight or baggage delays. This will mean departing the US on October 19<sup>th</sup>, arriving in Puerto Madryn on October 20<sup>th</sup>. Our office will be happy to assist you with reservations for extra nights.*

**Day 3, Wed, 22 Oct. Boarding day in Puerto Madryn, Argentina.** Following instructions provided by Oceanwide Expeditions, we'll stage our luggage and arrive at the pier in Puerto Madryn to board the ship. We'll check into our staterooms (just like arriving at a hotel, really!) and explore the ship, becoming acquainted with the various decks, lounges, and dining facilities. Your Field Guides leader will host a welcome meeting to go over our strategy for the tour, and Oceanwide's staff will hold briefings to outline the expedition's plans. Our Field Guides group (capped at 10 with one leader) will represent a subset of the participants of the cruise (up to 108 guests total), and it will be a good idea to start getting to know each other before we're fully underway. Of course, we'll want to keep an eye out for our first seabirds of the trip - in addition to initial encounters with birds that we will become familiar with through the journey, such as Southern Giant-Petrels and Black-browed Albatrosses, we'll be keeping an eye out for Manx Shearwater, for which this region is our best bet. All subsequent nights will be on the *ship*.



*The Southern Giant-Petrel lives up to its name; it is the largest of the petrel family, and is the more southerly of the two Giant-Petrels. We'll probably begin seeing them when we get to the open waters, and it's been the more common of the two on previous trips. Photograph by participant Debbie Vogt.*

**Days 4-5, Thu-Fri, 23-24 Oct. At sea en route to the Falkland Islands.** We'll continue to head south over the continental shelf off of Southern Argentina. En route, we'll hope to get acquainted with the seabirds of the region, including massive Black-browed and Royal Albatrosses, White-chinned Petrels, Common Diving-Petrels, Cape Petrel, Wilson's Storm-Petrel, and Slender-billed Prions, while we keep an eye out for any scarcer seabirds. During this transit, we may even see Argentinian landbird migrants which get caught over the ocean and seek the ship as a waystation. Your guide will be outside as much as possible, helping you to key in on the characteristic flight style and field marks of the wonderful seabirds that we'll encounter. This leg of the journey can also be good for finding dolphins and other marine mammals. The expedition staff will brief us on zodiac safety and we'll receive our ship-provided rubber boots (good quality Muck Boots or similar).

**Days 6-7, Sat-Sun, 25-26 Oct. Falkland Islands.** The British Overseas Territory of the Falkland Islands offers a fascinating window into human history and conflict, with Argentina disputing the British claim to these islands. While not ignoring the human conflict represented by the islands, our time here will focus on the wildlife that this relatively warm and lush landscape has to offer. Due to the islands' isolation from South America, a distinctive set of resident birds exists here, and we'll seek them out - Striated Caracara, Cobb's Wren, Falkland Steamer-Duck, Rufous-chested Dotterel, Two-banded Plover, and more. Our first day will likely be spent visiting the western end of the Falklands, including a site where we might explore a colony with up to 4 species of breeding penguin (Magellanic, Gentoo, Southern Rockhopper, and small



numbers of King) as well as Black-browed Albatross and Imperial Cormorants. We'll also stop in the islands' capital city of Port Stanley – during this time, instead of spending our time in museums and souvenir shops, we will arrange transportation to get us out onto the moorlands and beaches near the airport to search for Rufous-chested Dotterel, Two-banded Plover, and more.



*The Falkland Islands are home to some interesting birds, including the Striated Caracara. These large raptors feed on dead birds in the penguin and seabird colonies, and spend time scavenging along the beaches.  
Photograph by participant Jennifer Johnson.*

**Days 8-9, Mon-Tue, 27-28 Oct. At sea, en route to South Georgia.** As we leave the Falklands, say goodbye to trees for a while, as we're heading to some places with decidedly short vegetation. This stretch of the trip can be rather impressive for pelagic seabird diversity, including prions, diving-petrels, albatrosses, and petrels. We'll want to spend plenty of time on deck in anticipation of finding scarce birds like Kerguelen Petrel, Atlantic Petrel, Soft-plumaged Petrel, and more. As we reach the Antarctic Convergence, where cold Antarctic water meets warmer northern water and creates highly productive zones of upwelling, we'll begin our watch for Blue Petrels and the iconic Snow Petrel (our chances for Snow Petrel extend throughout our time on South Georgia and down to the Antarctic Peninsula). During this crossing, our chances at finding Gray-headed Albatross and Light-mantled Albatross increase as we close in on South Georgia (where both species nest).

**Days 10-13, Wed-Sat, 29 Oct-1 Nov. South Georgia.** Depending on weather, we'll attempt to make landings each day during our stay at South Georgia. This island represents the most awe-inspiring concentrations of animals that we are likely to see on the cruise, including penguins and marine mammals. This part of the trip includes an adventure to a large (100,000+) King Penguin colony, exploration of tussock grass-lined coves for South Georgia Pipit and South Georgia Pintail, time to enjoy big concentrations of scrappy Antarctic Fur Seals and bizarre (and bizarrely sweet) Southern Elephant Seals, and maybe even a visit to a Wandering Albatross colony. We'll plan to land at Grytviken where we can learn about the island's human history (including the legendary exploits of Ernest Shackleton) and the historic role of the island in the whaling industry. A museum and gift shop at Grytviken are also popular attractions.

**Day 14, Sun, 2 Nov. At sea, en route to the Antarctic Peninsula.** This route will take us from South Georgia past the South Orkney Islands, where we might make a call at the Argentinean base at Orcadas if the weather behaves properly. Otherwise, we'll be at sea, watching the flocks of Cape Petrels around the ship in anticipation of an Antarctic Petrel joining the mob.

**Day 15, Mon, 3 Nov. The Scenic Vistas of South Orkney.** Depending on the conditions, you might visit Orcadas Base, an Argentine scientific station on Laurie Island in the South Orkney archipelago. The personnel here will happily show you their facility, where you can enjoy expansive views of the surrounding glaciers. If a visit isn't possible, you may instead land in Coronation Island's Shingle Cove.

**Days 16-17, Tue-Wed, 4-5 Nov. Last Push to the Antarctic.** Enormous icebergs and a fair chance of fin whale sightings ensure there's never a dull moment on this last sea voyage south. Also, your best chance to spot Antarctic petrels is here.

**Days 18-20, Thu-Sat, 6-8 Nov. Antarctic Peninsula.** This is it! Though the spectacle of South Georgia and the lovely scenes of the Falklands are impressive, there's nothing quite like visiting on "The Continent" for the first time. We'll take the zodiacs ashore and spend time in an Adelie Penguin colony. These curious little penguins often approach humans closely, but they also might ignore us and focus on their nesting responsibilities. Though conditions vary tremendously day-to-day and year-to-year, the ship might also pass through areas with large chunks of ice, which can be very good for searching for seals (Weddell, Crabeater, and Leopard) and perhaps even Emperor Penguin (though this species is rare and not to be expected on our route).

**Days 21-22, Sun-Mon, 9-10 Nov. At sea en route to Ushuaia through the Drake Passage.** Though the 500-mile wide Drake Passage is notorious for its rough seas, the two-day crossing can also be placid. We'll spend time on deck searching through the seabirds following the ship, reacquainting ourselves with some that we left behind earlier in the trip (like Royal Albatrosses) and looking for new ones, too - perhaps a Soft-plumaged Petrel or a Great Shearwater. As we near the continent of South America, we'll return our rubber boots, pay our bar bills, and pack up our things - still smelling a bit like the penguin colonies of the Southern Ocean, I'm sure!

**Days 23-24, Tue-Wed 11-12 Nov. Disembarkation in Ushuaia and flights home.** After breakfast on the ship Wednesday, December 25th, we'll disembark and take buses to the Ushuaia airport (or transfer to hotels in Ushuaia if you are staying on longer). The flights depart for Buenos Aires in the afternoon and evening for overnight flights to the US, arriving on the following morning.

## About Your Guide

**Doug Gochfeld** was born and raised in Brooklyn, NY, and his interest in birds was sparked at a young age (he participated in his first CBC at the age of 7), in part by his father. This interest soon spiraled into a full-blown obsession for Doug, and aside from a several year adolescent and teenage sabbatical, he has been a dedicated and passionate birder ever since. He is especially interested in seabirds, long-distance migration, and avian vagrancy, but takes pleasure in all aspects of the natural world, be they avian or not. He's always excited to share his enthusiasm in, and knowledge of these subjects, and much more, on his tours.

He has guided pelagic birding trips off the East Coast of North America for many years, and worked aboard vessels (for NOAA and others) as a seabird observer for weeks at a time. He has guided birding groups on expedition cruises in the Antarctic, the Arctic, and the Subantarctic Islands of New Zealand. Before beginning to guide a full slate of tours all around the world for Field Guides in 2016, he traveled extensively as a working birder. These field jobs included several years of guiding on remote St. Paul Island, in Alaska's Pribilof Islands, and several seasons spent monitoring migration at the legendary migration hotspots of Cape May, New Jersey, and Eilat, Israel.

In addition to finding peace, excitement, and fascination in birds, he absolutely loves to communicate his insights into the bird world with all those who are interested, and interpreting this world for participants is a pastime that comes naturally to him. Whether close to home or halfway around the world, on land or at sea, this penchant for education and sharing is noted by participants, and his enthusiasm for finding and enjoying birds has proven to be contagious.

*"Doug's knowledge of pelagic species is incredible. He was relentless in canvassing the seas for hours each day. He communicates well, has a great sense of humor, and was a good leader overall."  
K.T. Atlantic Odessey*

Visit <https://fieldguides.com/our-staff/> for Doug's complete tour schedule; just click on his photo.



## About Your Ship

The *m/v Ortelius* is a 300-foot vessel, perfectly suited to expedition travel in polar regions with good viewing areas from the various decks. With an ice-strengthened hull it is able to navigate waters more comfortably than many other ships of similar size, and in normal conditions average travel speed is about 10-12 kts. The vessel has a high ice-class rating, and is therefore very suitable to navigate in solid one-year sea ice and loose multi-year pack ice. *Ortelius* was built in Poland in 1989, was named *Marina Svetaeva*, and served as a special purpose vessel for the Russian Academy of Science. The vessel was re-flagged and renamed *Ortelius* after the Dutch/Flemish cartographer, Abraham Ortelius (1527-1598) who published the first modern world atlas, the *Theatrum Orbis Terrarum* or *Theatre of the World* in 1570. At that time, the atlas was the most expensive book ever printed.

In addition to the 50 cabins (with a capacity of 108 guests), the ship contains an infirmary, two adjacent dining rooms, a bar/lounge and lecture room. The ship's crew is international, and the expedition staff is variable, but usually largely European. *Ortelius* carries 11 zodiacs, which includes a reserve or two. Announcements, briefings, and lectures will be in English and, in keeping with the spirit of expedition travel, dress is informal. Internet service used to be slow, and for a fee, but as of 2024, these vessels are equipped with Starlink internet, and all guests are given a daily data allowance, before having to pay for more, or wait for the next day for their allowance to re-set. It is pretty good in some patches, but can be rather unreliable in much of our travel area, especially if the weather is bad. For urgent and important communications, the ship is equipped with satellite phone (pricey) and facsimile systems. There is power in all cabins and electricity is of the European 220-volt variety. American travelers will require an adapter for any electronic devices. Laundry service is available on board for a fee. A doctor will travel with us, and the infirmary is well provisioned with medicines and equipment. Those passengers on regular medication should bring with them an adequate personal supply, and participants concerned about seasickness are encouraged to consult with their physicians before departure.

More information about *Ortelius* can be found on Oceanwide's website at: <https://oceanwide-expeditions.com/our-fleet/m-v-ortelius>

## Financial Information

### PER PERSON CRUISE FEE IN DOUBLE OCCUPANCY FROM PUERTO MADRYN:

Porthole - \$17450; Window - \$18150; Deluxe - \$19550

**LAND FEE: \$875 per person in double occupancy**

**DEPOSIT:** 20% of the cruise fee per person; ***please let us know your cabin category preference***

**FINAL PAYMENT DUE:** April 23, 2025

**SINGLE SUPPLEMENT:** 1.7 times the published cruise fee. Single travelers who wish to share their cabin/hotel room should indicate this on the registration form. The published per person twin occupancy fare is guaranteed in this case, whether or not a cabinmate is available. Single travelers who require sole occupancy of cabins will be charged at 1.7 times the published fare.

The **single supplement for the land portion of the tour** is \$160.

**LIMIT: 10**

*\*\*Price Changes—Oceanwide Expeditions (from whom we have an allotment of cabins) reserves the right to impose surcharges (price increases) up to 60 days before departure due to unfavorable changes in exchange rates, increases in airfares or other transportation costs, increases in local operating costs, harbor dues, duties, taxes, or government action.*

*\*\*Insurance—Oceanwide Expeditions requires that travelers obtain insurance that will cover personal injury, medical, repatriation, and evacuation expenses. The cost of emergency evacuation and medical care can be very high. A minimum of \$75,000 is required and it is strongly recommended that coverage be extended to include cancellation and trip interruption. Coverage offered through CSA on the Field Guides Comfort Plan meets these minimums.*

Please review the following link for Oceanwide Expeditions most up-to-date terms and conditions:

<https://oceanwide-expeditions.com/page/terms-and-conditions>

## Other Things You Need to Know

**TOUR MANAGER:** The manager for this tour is Karen Turner. Karen will be happy to assist you in preparing for the tour. If you have any questions, please don't hesitate to call her!

**DOCUMENTS:** A current passport valid for three months beyond the date of your return is necessary for US citizens to enter Argentina. We recommend that your passport be valid for at least 6 months beyond the dates of your visit, as regulations vary from country to country, and are subject to change. No visa is required.

If you are a citizen of another country, please check with the Argentine consulate nearest you for entry requirements. Information about consulates and entry requirements is generally available online or you can contact us and we will be happy to look this up for you. Passports should have an adequate number of blank pages for the entire journey. Some countries require a blank page for their stamp and as a precaution it is best to have one blank page per country you will visit or transit.

**AIR ARRANGEMENTS:** Field Guides is a full service travel agency and your tour manager will be happy to assist you with flights to join this tour. Field Guides does not charge a service fee for these services to clients booking a tour. However, we understand that tech-savvy clients often prefer to shop online or that you may wish to use mileage to purchase tickets. Regardless of which method you choose, your tour manager will be happy to provide assistance regarding ticket prices and schedules, along with rental cars and extra hotel nights as needed.

Please be sure to check with your tour manager prior to purchasing your ticket to make sure the flights you have chosen will work well with the tour itinerary and that the tour is sufficiently subscribed to operate. Once purchased, most airline tickets are non-refundable and carry a penalty to change. Field Guides cannot be responsible for these fees.

**Also, it is imperative that we receive a copy of your comprehensive flight itinerary—including any and all flights not covered in the tour fee—so that we may track you in the event of missed connections, delays, or other mishaps.**

**LUGGAGE:** In addition to standard travel luggage, you might wish to bring a daypack to take ashore during our landings – a waterproof bag is a good idea for this purpose. Please be aware that many airlines have recently modified their luggage policies and are charging additional fees for checked bags. Updates could easily occur before your departure, so you may wish to contact your airline to verify the policy. Additional charges for bags on any flights, whether these are covered by the tour fee or not, will be the client's responsibility.

**SMOKING:** Please note that the *m/v Ortelius* is generally smoke-free with designated smoking areas outside. Almost all of our clients prefer a smoke-free environment. If you smoke, please be sensitive to the group and refrain from smoking at meals, in vehicles, and in proximity to the group on trails and elsewhere.

**TOUR INCLUSIONS/EXCLUSIONS:** The **cruise fee** from Puerto Madryn includes the voyage aboard the vessel as indicated in the itinerary; all meals throughout the voyage aboard the ship including snacks, coffee, and tea; all shore excursions and activities throughout the voyage by zodiac; program of lectures by noted naturalists, leadership by experienced expedition staff, and the guide services of your Field Guides leader; all miscellaneous service taxes and port charges throughout the program; and comprehensive pre-trip material. Tipping at group meals and for drivers, porters, and local guides is included in your tour fee and will be handled for the group by your Field Guides leader(s). However, if you would like to recognize your Field Guides leader(s) or any local guide(s) for exceptional service, it is entirely appropriate to tip. We emphasize that such tips are optional and not expected.

The tour fee does not cover bar drinks that are charged to one's cabin. This includes soft drinks, juices separate from those served at meals, and alcoholic beverages. Coffee, tea, and hot chocolate are free of charge and available 24 hours in the lounge.

The **land fee** of \$875 is for one person in double occupancy in Puerto Madryn. It includes lodging for the night of October 21<sup>st</sup>, dinner on October 21<sup>st</sup>, breakfast and lunch on October 22<sup>nd</sup>, luggage transfer from the hotel to the ship and a private bus for the group in the Falklands.

The above fees do not include your airfare to and from ports of embarkation and disembarkation, airport taxes, visa fees, any checked or carry-on baggage charges imposed by the airlines, any alcoholic beverages, the customary gratuity at the end of the voyage to the boat crew (guidelines will be provided), phone calls, laundry, or other items of a personal nature.



The **single supplement** for the land portion of the tour is \$160, if you do not have a roommate but wish to share, we will try to pair you with a roommate from the tour; but if none is available, you will be billed for the single supplement. Our tour fees are based on double occupancy; one-half the cost of a double room is priced into the tour fee. The single supplement is calculated by taking the actual cost of a single room and subtracting one-half the cost of a double room (plus any applicable taxes).

**Single travelers** who wish to share their cabin/hotel room should indicate this on the registration form. The published per person double occupancy fare for the cruise is guaranteed in this case, whether or not a cabinmate is available. Single travelers who require sole occupancy of cabins will be charged at 1.7 times the published fare.

**TOUR REGISTRATION:** To register for this tour, please contact us at [fieldguides.com/contact-us/](https://fieldguides.com/contact-us/). *(Please let us know your cabin category preference.)* Our office will be in touch with you by email by the next business day (Mon-Fri) with instructions on how to complete our new electronic registration form and medical questionnaire. (We are no longer accepting the paper version.)

Please mail your **deposit of 20% of the cabin fee per person**, or see <https://fieldguides.com/payment-options/> for our Payment Options. **Full payment** of the tour fee is due 180 days prior to departure, or **by April 23, 2025**. **We will bill you for the final payment at either 180 days or when the tour has reached sufficient subscription to operate, whichever date comes later.** Since the cost of your trip insurance and airline tickets is generally non-refundable, please do not finalize these purchases until you have received final billing for the tour or have been advised that the tour is sufficiently subscribed to operate by your tour manager.

**CANCELLATION POLICY:** Due to the cancellation policy of our supplier, Oceanwide Expeditions, we must amend our usual cancellation policy as follows: Once you confirm your space on the tour, the deposit (20% of the cabin fee) is non-refundable. If cancellation occurs between 179 and 90 days before the departure date, 50% of the tour fee is non-refundable. Thereafter, all deposits and payments are not refundable.

This policy only applies to payments made to Field Guides for tour fees (and any services included in those fees). Airline tickets not included in the tour fee and purchased separately often carry penalties for cancellation or change, or are sometimes totally non-refundable. Additionally, if you take out trip insurance the cost of the insurance is not refundable so it is best to purchase the policy just prior to making full payment for the tour or at the time you purchase airline tickets, depending upon the airlines restrictions.

Field Guides reserves the right to cancel any tour prior to departure, in which case full refund will constitute full settlement to the passenger. The right is reserved to substitute in case of emergency another guide for the original one.

**TRIP CANCELLATION & MEDICAL EMERGENCY INSURANCE:** We strongly recommend you consider purchasing trip cancellation (including medical emergency) insurance to cover your investment in case of injury or illness to you or your family prior to or during a trip. Because we must remit early (and substantial) tour deposits to our suppliers, you acknowledge and agree that we will not issue a refund when cancellation occurs outside of our cancellation policy as published in the itinerary (see CANCELLATION POLICY). In addition, the Department of State strongly urges Americans to consult with their medical insurance company prior to traveling abroad to confirm whether their policy applies overseas and if it will cover emergency expenses such as a medical evacuation. US medical insurance plans seldom cover health costs incurred outside the United States unless supplemental coverage is purchased. Furthermore, US Medicare and Medicaid programs do not provide payment for medical services outside the United States.

When making a decision regarding health insurance, Americans should consider that many foreign doctors and hospitals require payment in cash prior to providing service and that a medical evacuation to the United States may cost well in excess of \$50,000. Uninsured travelers who require medical care overseas often face extreme difficulties. When consulting with your insurer prior to your trip, please ascertain whether payment will be made to the overseas healthcare provider or whether you will be reimbursed later for expenses that you incur.

US citizens will receive information from us regarding optional tour cancellation/emergency medical insurance. Our agent, CSA, will insure for trip cancellation and interruption, medical coverage, travel delay, baggage loss and delay, and emergency medical transportation. If you purchase the insurance prior to, or within 24 hours of making final payment for the tour, and cover all non-refundable parts of the trip (including any non-refundable flights and in some cases, other arrangements), pre-existing conditions are covered. You may purchase your CSA policy on-line by visiting our website at <https://fieldguides.com/trip-cancellation-insurance/> and clicking the link to CSA. The CSA webpage also includes a contact number.

**Currently we are unable to offer CSA insurance policies to residents of New York and Hawaii.** We have had clients provide positive feedback after acquiring insurance thru InsureMyTrip (<https://www.insuremytrip.com/>) in the past, and would suggest that company as an alternative. When purchasing insurance with a company other than CSA,

you will want to understand whether the timing of your purchase will affect coverage before paying your first deposit. Insurance purchase requirements can vary from company to company, and such requirements could limit your options if you do not look into this until making your final payment for your tour. Please let us know if you have any questions about this.

Please note, once the insurance is purchased it is non-refundable, so please check with your tour manager prior to making the purchase to assure the tour will operate as scheduled. Citizens of other countries are urged to consult their insurance broker.

**RESPONSIBILITY:** For and in consideration of the opportunity to participate in the tour, each tour participant and each parent or legal guardian of a tour participant who is under 18 agrees to release, indemnify, and hold harmless Field Guides Incorporated, its agents, servants, employees, shareholders, officers, directors, attorneys, and contractors as more fully set forth in the Release and Indemnity Agreement on the registration form. Field Guides Incorporated acts only as an agent for the passenger in regard to travel, whether by railroad, motorcar, motorcoach, boat, airplane, or other means, and assumes no liability for injury, damage, loss, accident, delay, or irregularity caused by defect in such vehicles or for any reason whatsoever, including the acts, defaults, or bankruptcies of any company or person engaged in conveying the passenger or in carrying out the arrangements of the tour. You acknowledge and agree that Field Guides Incorporated is not responsible for losses or additional expenses due to delay or changes in air or other services, sickness, weather, strike, war, quarantine, or other causes. The tour participant shall bear all such losses and expenses. Field Guides Incorporated reserves the right to substitute hotels of similar category for those indicated and to make any changes in the itinerary where deemed necessary or caused by changes in air schedules. Field Guides Incorporated reserves the right to decline to accept or to retain any person as a member of any tour. Baggage is at owner's risk entirely.

Participants should be in good health and should consult a physician before undertaking a tour. If you have questions about the physical requirements of a tour, please contact our office for further information. Participants should prepare for the tour by reading the detailed itinerary, the information bulletin, and other pertinent matter provided by Field Guides. Each participant is responsible for bringing appropriate clothing and equipment as recommended in our bulletins.

THE RECEIPT OF YOUR TOUR DEPOSIT SHALL BE DEEMED TO BE CONSENT TO THE ABOVE CONDITIONS. EACH TOUR PARTICIPANT AND EACH PARENT OR LEGAL GUARDIAN OF A TOUR PARTICIPANT WHO IS UNDER 18 SHALL SIGN AND DELIVER THE RELEASE AND INDEMNITY AGREEMENT AT THE TIME OF REGISTRATION.

3/22; 5/23peg

6/23 DG

3/25 DG; peg